



# Tamsulosin vs. Tadalafil as medical expulsive therapy for distal ureteral stones: a systematic review and meta-analysis

Mikhael Belkovsky<sup>1</sup>, Giulia Veneziani Zogaib<sup>2</sup>, Carlo Camargo Passerotti<sup>3</sup>, Everson Luiz de Almeida Artifon<sup>1</sup>, José Pinhata Otoch<sup>1</sup>, José Arnaldo Shiomi da Cruz<sup>1,2,3</sup>

<sup>1</sup> Departamento de Técnica Cirúrgica, Universidade de São Paulo - USP, São Paulo, SP, Brasil; <sup>2</sup> Departamento de Urologia, Universidade Nove de Julho, São Paulo, SP, Brasil; <sup>3</sup> Serviço de Urologia Hospital Alemão Oswaldo Cruz, São Paulo, SP, Brasil

## ABSTRACT

**Purpose:** Medical expulsive therapy (MET) is recommended for distal ureteral stones from 5 to 10 mm. The best drug for MET is still uncertain. In this review, we aim to compare the effectiveness of tadalafil and tamsulosin for distal ureteral stones from 5 to 10 mm in terms of stone expulsion rate (SER), stone expulsion time (SET) and the side effect profile.

**Materials and methods:** A comprehensive literature search was conducted on MEDLINE, EMBASE, Cochrane Central Register of Controlled Trials, Scopus and Web of Science, from inception until April 2023. Only randomized controlled trials were included in the analysis.

**Results:** Eleven publications with 1,330 patients were included. We observed that tadalafil has a higher SER (OR 0.55, CI 95% 0.38;0.80, p=0.02, I2=52%) and the same efficacy in SET (MD 1.07, CI 95% -0.25; 2.39, p=0.11, I2=84%). No differences were found when comparing side effects as headache, backache, dizziness, and orthostatic hypotension.

**Conclusion:** Tadalafil has a higher stone expulsion rate than tamsulosin as a medical expulsive therapy for patients with distal stones from 5 to 10 mm without differences in side effects.

## ARTICLE INFO

 Mikhael Belkovsky

<https://orcid.org/0000-0002-6599-7548>

### Keywords:

Tadalafil; Adrenergic alpha-Antagonists; Tamsulosin; Meta-Analysis as Topic

**Int Braz J Urol. 2023; 49: 668-76**

Submitted for publication:  
July 26, 2023

Accepted after revision:  
August 26, 2023

Published as Ahead of Print:  
September 25, 2023

## INTRODUCTION

Nephrolithiasis is one of the most common diagnosed urinary diseases that mostly affects individuals between the ages of 20–40 years. The clinical presentation may include colic pain, urinary symptoms, nausea, and vomiting. Ureteral stones account for 22% of nephrolithiasis cases, with 68% being distal ureteral stones (1).

Medical Expulsive Therapy (MET) is recommended for distal stones measuring 5 to 10 mm to reduce the risk of surgical intervention and reduce the stone expulsion time (2). MET involves the use of medications that facilitate stone passage by relaxing smooth muscle, with  $\alpha$ -blockers, phosphodiesterase inhibitors (PDEIs), and calcium channel blockers among the commonly employed drugs (3). Nowadays,  $\alpha$ -blockers, such as tamsulosin, are the preferred option for MET. This recommendation, however, is based on conflicting evidence that shows limited benefits (4–6).

Network meta-analysis compared multiple alternatives for MET and, interestingly, silodosin, also an  $\alpha$ -blocker, seems to have the best performance as monotherapy. However, these analyses are restricted to limited number of outcomes, usually only stone expulsion rate (SER) and stone expulsion time (SET) and leave uncertain the safety profile of this interventions (7, 8).

Tadalafil, a more accessible drug, but a PDEI, has also been proposed as a viable alternative for MET. Studies and meta-analysis that compared tadalafil and tamsulosin for the treatment of distal ureteral stones from 5 to 10 mm have shown conflicting results (9, 10). The last meta-analysis about this subject was published in 2017 with 565 patients. Bai et al. (11) observed that tadalafil outperforms the tamsulosin without differences in side effects.

Given that subsequent trials (1, 12–15) have been conducted since the publication of the meta-analysis, we aim to explore the effects of tadalafil compared to tamsulosin considering new evidence. The purpose of this meta-analysis is to provide an updated assessment of the efficacy and safety of tadalafil versus tamsulosin as medical expulsive therapy for distal ureteral stones measuring 5 to 10 mm.

## MATERIALS AND METHODS

### Registration and databases search

This study was registered at Prospero CRD42023417044 (Prospero register). A search was conducted at PubMed/MEDLINE, Embase, Web of Science, Scopus, and Cochrane databases from its inception to April 2023 to identify randomized controlled trials reporting the comparison of tadalafil and tamsulosin as medical expulsive therapy for distal stones from 5 to 10mm. Our outcomes of interest were stone expulsion rate, stone expulsion time, pain episodes, analgesic use, and side effects.

### Search strategy

Tadalafil and tamsulosin and (stone or stones or nephrolithiasis or calculi or calculus) and (“randomized controlled trial” or “controlled trial” or randomized or placebo or “drug therapy” or randomly or trial or groups).

### Screening

EndNote Online™ was utilized to remove any duplicate studies. Two independent researchers conducted a screening of titles and abstracts to eliminate irrelevant studies. Following this process, the full text was reviewed to select the included articles. Any disagreements were solved by a third reviewer.

### Data Extraction and Quality Assessment

Data was independently extracted from the included studies by two authors. Any discrepancies among the extracted data were resolved by discussion with a third reviewer. The Rob2 score (16) was used to assess the quality of the RCTs.

### Statistical Analyses

The meta-analysis was performed by the Review Manager, version 5.4. Continuous outcomes are presented as a mean difference (MD) with 95% confidence interval (CI). Dichotomous data are presented as odds ratio (OR) with 95% CI. Pooled estimates were calculated with the random-effect model, considering that the pa-

tients came from different populations. We also performed a subgroup analysis of different doses of tadalafil. For all statistical analyses, a two-sided value of  $P < 0.05$  was considered statistically significant.

## RESULTS

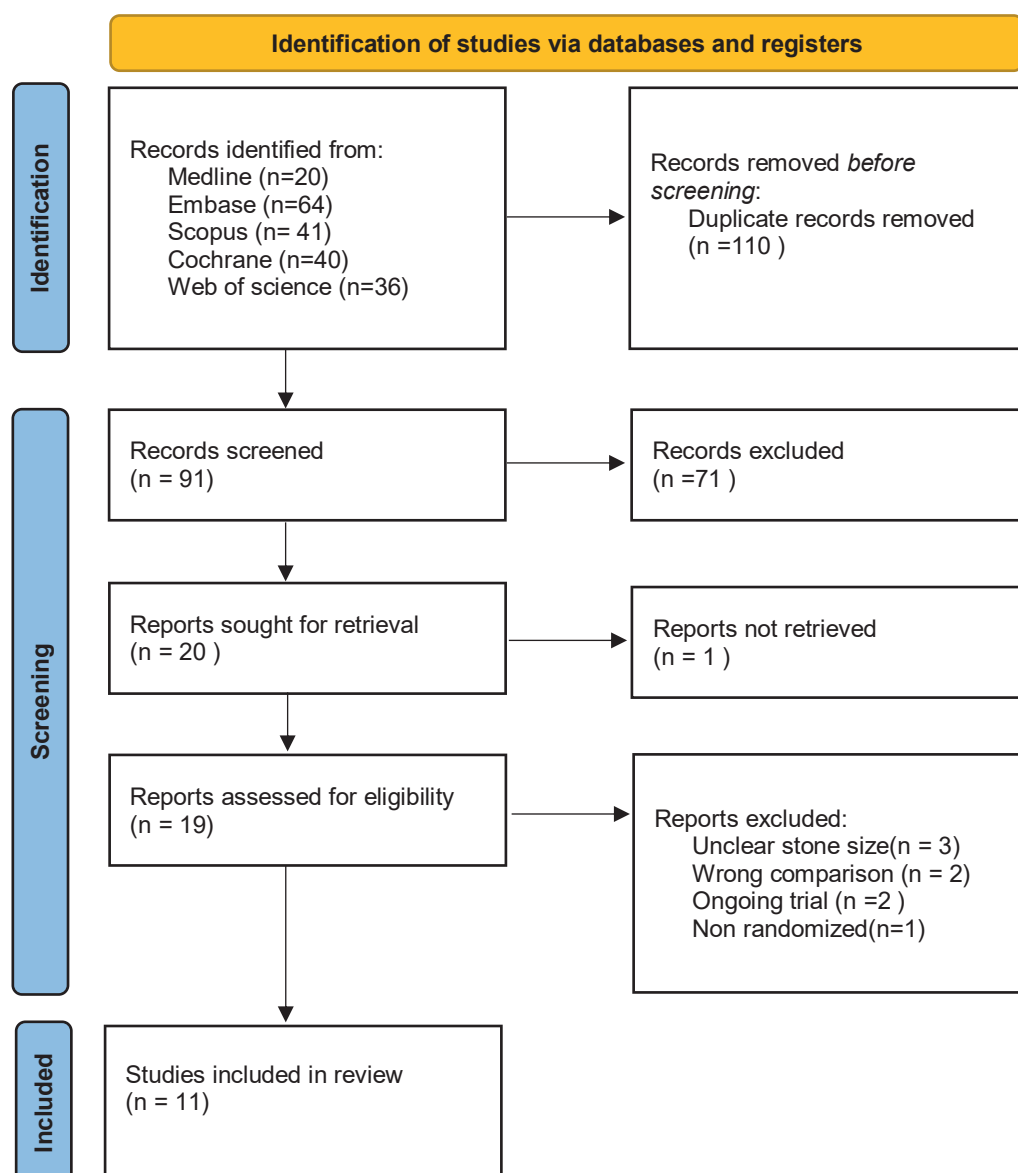
The search retrieved 201 articles. After screening 11 were included in this study (Fig-

ure-1). In total, 1,330 patients were included. Most of the studies followed patients up to 4 weeks. The dosage of tamsulosin was the same across the studies (0.4mg), but 8 studies used 10mg of tadalafil and 3 studies used 5mg. Four studies lacked gender distribution (Table-1).

### Stone expulsion

Overall, tadalafil was more efficient regarding our primary outcome (SER) than tamsu-

Figure 1 - Prisma flow diagram.



**Table 1 - Baseline characteristics of included studies.**

Study	Tamsulosin dose (mg)	Tadalafil dose (mg)	Number of patients, Tamsulosin/Tadalafil	Mean age(y)±SD, Tamsulosin/Tadalafil	Males (%), Tamsulosin/Tadalafil	Mean stone size (mm)±SD, Tamsulosin/Tadalafil	Duration (weeks)
Abdelaal et al., (15) 2023	0.4	5	50/50	38.7/41.9 <sup>c</sup>	70/68	6.7±1.3/6.9±1.5	4
Abishek et al., (20) 2015 <sup>b</sup>	0.4	10	50/50	NA	NA	NA	NA
Aggarwal et al., (21) 2017 <sup>b</sup>	0.4	10	109/109	NA	NA	NA	4
Falahatkar et al., (1) 2021	0.4	10	44/44	37.0±11.3/ 37.3±12	54.5/47.7	6.9±1.5/6.9±1.7	4
Goyal et al., (12) 2018	0.4	10	61/62	42.1±13.9/ 42.6±14.9	70.5/66.1	7.5±1.1/7.6±0.9	4
Gur et al., (13) 2021	0.4	5	48/46	41±15.9/ 39.0±12 <sup>a</sup>	100/100	6.2±2.2/6.1±1.6 <sup>a</sup>	NA
KC et al., (22) 2016	0.4	10	41/44	31.4±12/ 32.1±13.3	65.9/54.5	7.1±1.2/7.1±1.5	2
Khouni et al., (14) 2022 <sup>b</sup>	0.4	5	42/40	NA	NA	NA	6
Kumar et al., (23) 2015	0.4	10	90/90	36.4±10/ 37.5±13.5	68.9/74.4	7.4±1.2/7.8±1.4	4
Puvvada et al., (24) 2016	0.4	10	100/100	37.5±12.7/ 36.3±11.3	67/65	7.2±1.3/7.1±1.4	4
Raza et al., (25) 2016 <sup>b</sup>	0.4	10	30/30	NA	NA	NA	4

<sup>a</sup> Estimated from median and interquartile range using the Cochrane estimator; <sup>b</sup> Conference abstract; <sup>c</sup> The article did not provided information about age dispersion; RCT: randomized controlled trial; NA: not available.

losin (OR 0.55, CI 95% 0.38;0.80,  $p=0.02$ ,  $I^2=52\%$ ), but no difference was observed in SET (MD 1.07, CI 95% -0.25; 2.39,  $p=0.11$ ,  $I^2=82\%$ ) (Figure-2).

#### Pain episodes and analgesic use

Only 4 RCT assessed pain episodes, with 292 patients in the tamsulosin group, and 296 patients in the tadalafil group. No statistical significance was observed when comparing pain episodes (OR 0.20 CI 95% -0.38; 0.78,  $p=0.51$ ,  $I=94\%$ ) or analgesic use (MD 44.46, CI 95% -29.10; 118.01,  $p=0.24$ ,  $I=91\%$ ) (Figure-3). Regarding analgesic use, all authors used oral diclofenac as analgesic, only KC et al. used aceclofenac.

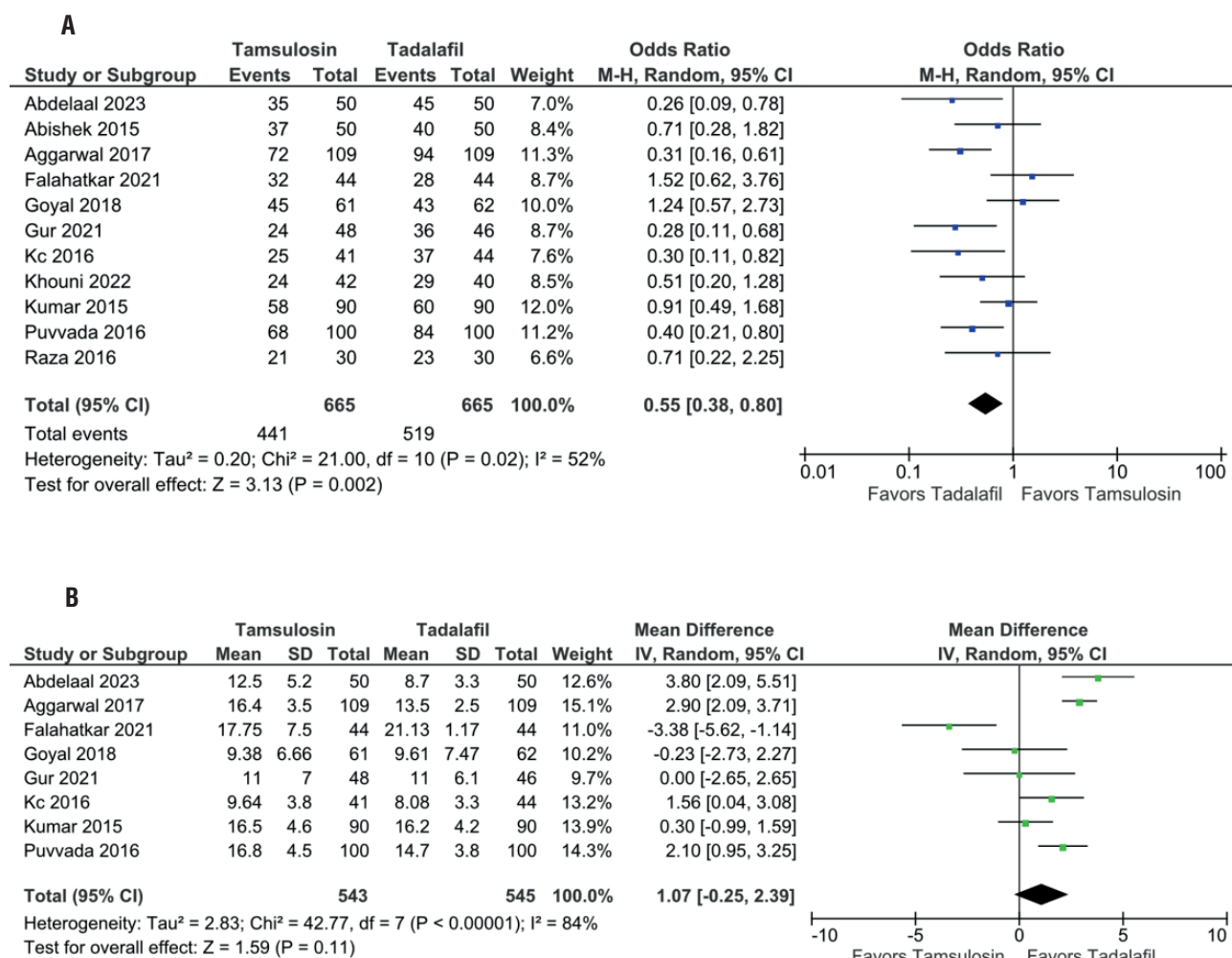
#### Side effects

No difference was observed among all the assessed side effects. Six studies reported headache (OR 0.68, CI 95% 0.44;1.03,  $p=0.92$ ,  $I^2=0\%$ ), backache (OR 0.83, CI 95% 0.47; 1.45,  $p=0.51$ ,  $I^2=30\%$ ), and orthostatic hypotension (OR 1.23, CI 95% 0.65;2.35,  $p=0.53$ ,  $I^2=30\%$ ) as side effects while only five reported dizziness (OR 0.79, CI 95% 0.49;1.29,  $p=0.35$ ,  $I^2=0\%$ ) (Figure-4).

#### Subgroup analyses

We performed a subgroup analysis of SER and SET among different doses of tadalafil (5mg and 10 mg) (Appendix-1). We found that the

Figure 2 - Tadalafil vs tamsulosin stone expulsion, higher SER, no difference in SET.



(A) Forest plot of stone expulsion rate. (B) Forest plot of stone expulsion time, CI, confidence interval; SD, standard deviation.

subgroup receiving a 5mg showed a higher benefit in terms of SER (OR 0.34, CI 95% 0.19;0.59, p=0.0001, I<sup>2</sup>=0%) compared to the subgroup receiving a 10mg dose (OR 0.65, CI 95% 0.42;1.00, p=0.05, I<sup>2</sup>= 56%). No differences were observed when comparing SET within both subgroups, 5mg (MD 2.04, CI95% -1.67;5.75, p=0.28, I<sup>2</sup>=82%) and 10mg (MD 0.76, CI95% -0.76;2.27, p=0.33, I<sup>2</sup>=86%).

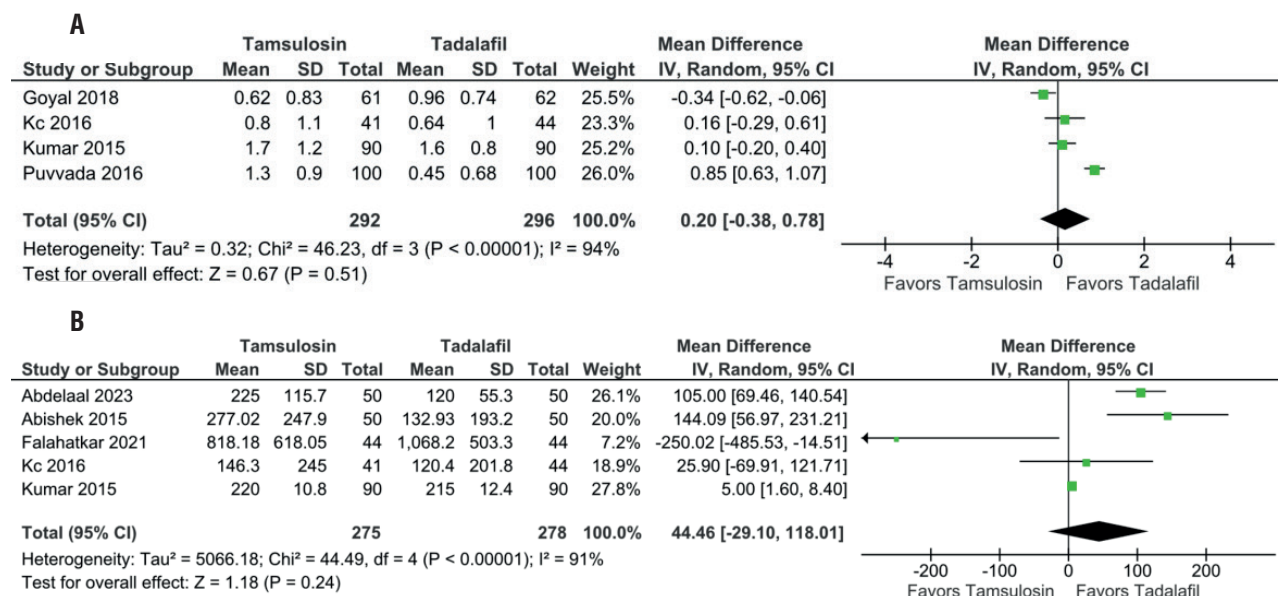
**DISCUSSION**

Our meta-analysis included 1330 patients from 11 RCTs comparing tamsulosin and tadalafil

in cases with distal ureteral stones from 5 to 10mm. We observed that tadalafil has the same SET and even a greater SER than tamsulosin, without differences in side effects (headache, dizziness, backache, and orthostatic hypotension).

Medical expulsive therapy (MET), typically using α-blockers, is an off-label recommendation, supported by urological societies, to facilitate the passage of distal ureteral stones sized 5-10 mm (2, 3). This recommendation is based on a pooled analysis on 27 studies that shows a SER of 77.3% of α-blockers, compared to 54.4% of placebo (2). However, this recommendation is contentious due to contradictory evidence from randomized con-

**Figure 3 - Tadalafil vs tamsulosin no difference in pain episodes or analgesic use.**



(A) Forest plot of pain episodes (B) Forest plot of analgesic use. CI, confidence interval; SD, standard deviation.

trolled trials, demonstrating limited benefits of this therapy (4-6). In this regard, tadalafil, has also been suggested as a potential alternative, with concerns about adverse events and uncertainties about its efficacy (17).

The largest previous meta-analysis, conducted by Bai et. al. (11), included 565 patients from 4 RCTs. Bai et. al. described that tadalafil outperforms tamsulosin not only when comparing SER (without differences in side effects) but also when comparing analgesic use and SET. Indeed, the last two comparisons were made applying the fixed effect model. This model is a controversial approach in statistics that increases the chance of false positive results (18). In our study all the comparisons were done using the random effects model.

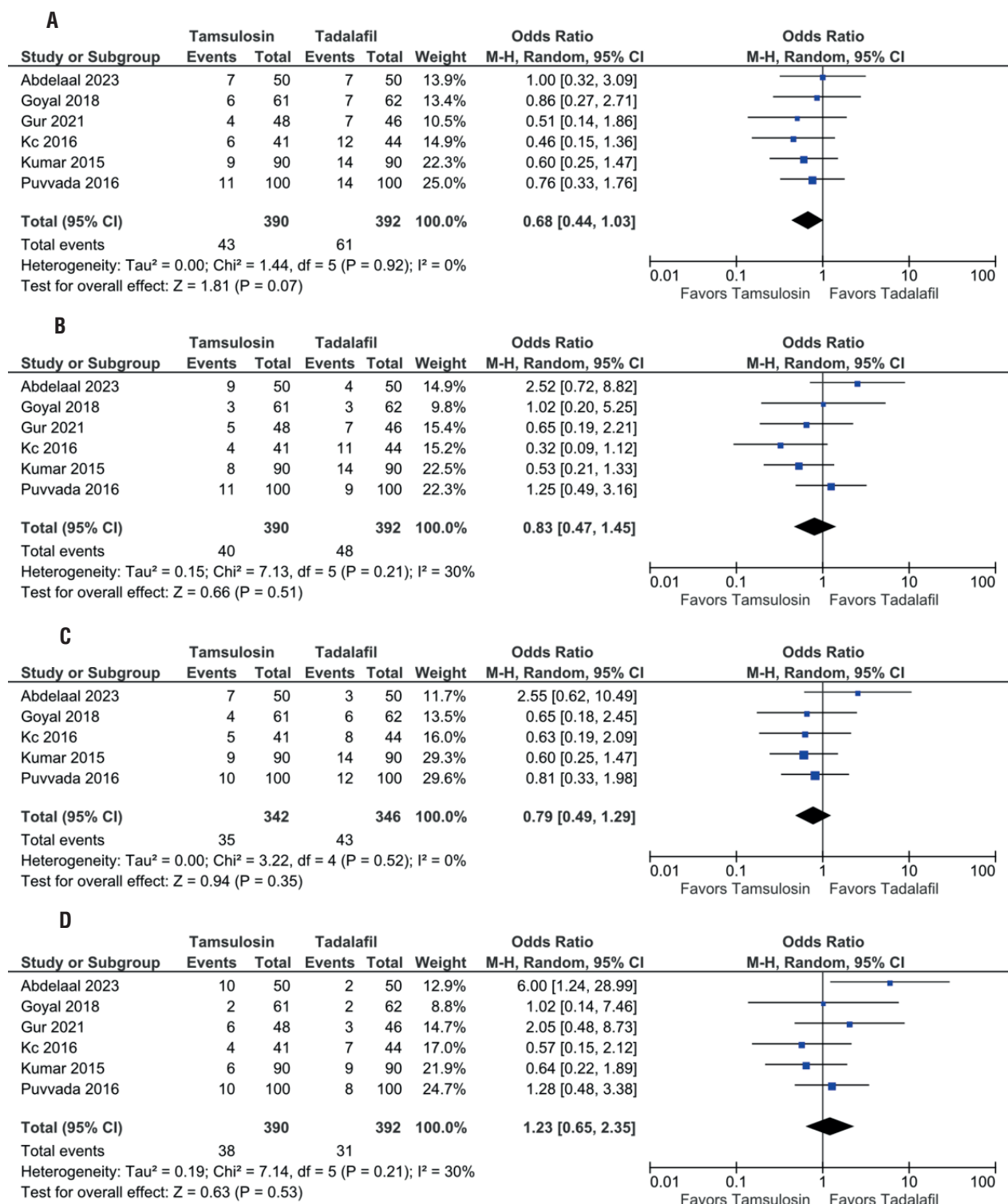
Curiously lower doses of tadalafil seem to be more effective. Even if a statistical artifact seems to be the most reasonable explanation to this finding, as it goes against the dose-response principle, it is also biologically plausible that excessive smooth muscle relaxation can hinder the stone expulsion process, as observed in some studies comparing antispasmodics with placebo (8).

A more modern approach to establish the best MET is the use of network meta-analysis (NMA) (7, 8). The most recent was conducted by Sharma et. al. in 2021 (7). This NMA compared 50 RCTs involving various interventions such as  $\alpha$ -blockers, PDEi, and CCB (calcium channel blockers). The outcomes were exclusively SER and SET.

Even if it claimed that the two most effective options for MET are a combination of naftopidil and steroids (resulting in the highest SER) or a combination of tadalafil and silodosin (resulting in the shortest SET) the absence of side effect assessment limits its clinical significance (7). It also included patients with stones smaller than 5mm, which represents a subgroup where the benefits of MET are not clearly established (2, 3). Additionally, the exclusion of conference abstracts from the analysis raises concerns about potential publication bias.

Based on our clinical experience dealing with patients with urological conditions in an ambulatory setting, in Brazil, we observe that MET with tadalafil has a lower cost than MET with tamsulosin and we believe that it could be true for other centers, which strengthens our recommen-

Figure 4 - Tadalafil vs tamsulosin no difference in side effects.



(A) Forest plot of headache episodes. (B) Forest plot of backache episodes. (C) Forest plot of dizziness episodes. (D) Forest plot of the number of orthostatic hypotension episodes. CI, confidence interval; SD, standard deviation.

dation. However, our study lacks a cost-effective analysis as this information was not provided by the included studies.

Our study has limitations. Included articles lacked information regarding time from beginning of the symptoms to introduction of MET, and regarding use of additional medications that could affect the efficacy of the treatment. As a confounding factor, the impact of tadalafil on fre-

Finally, our study leaves unanswered questions as the safety and efficacy of combined therapy with tamsulosin and tadalafil for distal ureteral stones and the ideal dosage of tadalafil for MET.

**CONCLUSIONS**

Tadalafil has a higher stone expulsion rate than tamsulosin as a medical expulsive therapy

**Figure 5 - Risk of bias of the included studies.**

<u>Unique ID</u>	<u>D1</u>	<u>D2</u>	<u>D3</u>	<u>D4</u>	<u>D5</u>	<u>Overall</u>	
Abdelaal 2023	+	!	+	+	+	+	+
Abishek 2015	!	!	+	+	+	!	!
Aggarwal 2017	!	!	+	+	+	!	-
Falahatkar 2021	+	!	+	+	+	+	
Goyal 2018	!	!	+	+	+	!	D1
Gur 2021	!	!	+	+	+	+	D2
Kc 2016	+	!	+	+	+	+	D3
Khouni 2022	!	!	+	+	+	!	D4
Kumar 2015	+	!	+	+	+	+	D5
Puvvada 2016	+	!	+	+	+	+	
Raza 2016	!	!	+	+	+	!	

+ Low risk  
! Some concerns  
- High risk

D1 Randomisation process  
 D2 Deviations from the intended interventions  
 D3 Missing outcome data  
 D4 Measurement of the outcome  
 D5 Selection of the reported result

quency of sexual intercourse, which also have a potential role in the stone expulsion, was not assessed either (19). Although articles presented low bias, the absence of description of the allocation concealment in all included trials may result in some undetected bias (Figure-5).

for patients with distal stones from 5 to 10 mm without differences in side effects.

**CONFLICT OF INTEREST**

None declared.

**REFERENCES**

- Falahatkar S, Akhavan A, Esmaeili S, Amin A, Kazemnezhad E, Jafari A. Efficacy of tamsulosin versus tadalafil as medical expulsive therapy on stone expulsion in patients with distal ureteral stones: A randomized double-blind clinical trial. *Int Braz J Urol.* 2021;47:982-8.
- Assimos D, Krambeck A, Miller NL, Monga M, Murad MH, Nelson CP, et al. Surgical Management of Stones: American Urological Association/Endourological Society Guideline, PART II. *J Urol.* 2016;196:1161-9.
- Türk C, Knoll T, Seitz C, Skolarikos A, Chapple C, McClinton S; European Association of Urology. Medical Expulsive Therapy for Ureterolithiasis: The EAU Recommendations in 2016. *Eur Urol.* 2017;71:504-7.
- Furyk JS, Chu K, Banks C, Greenslade J, Keijzers G, Thom O, et al. Distal Ureteric Stones and Tamsulosin: A Double-Blind, Placebo-Controlled, Randomized, Multicenter Trial. *Ann Emerg Med.* 2016;67:86-95.e2.
- Ye Z, Zeng G, Yang H, Tang K, Zhang X, Li H, et al. Efficacy and Safety of Tamsulosin in Medical Expulsive Therapy for Distal Ureteral Stones with Renal Colic: A Multicenter, Randomized, Double-blind, Placebo-controlled Trial. *Eur Urol.* 2018;73:385-91.
- Pickard R, Starr K, MacLennan G, Lam T, Thomas R, Burr J, et al. Medical expulsive therapy in adults with ureteric colic: a multicentre, randomised, placebo-controlled trial. *Lancet.* 2015;386(9991):341-9.



7. Sharma G, Kaundal P, Pareek T, Tyagi S, Sharma AP, Devana SK, et al. Comparison of efficacy of various drugs used for medical expulsive therapy for distal ureteral stones: A systematic review and network meta-analysis. *Int J Clin Pract*. 2021;75:e14214.
8. Liu H, Wang S, Zhu W, Lu J, Wang X, Yang W. Comparative efficacy of 22 drug interventions as medical expulsive therapy for ureteral stones: a systematic review and network meta-analysis. *Urolithiasis*. 2020;48:447-57.
9. Montes Cardona CE, García-Perdomo HA. Efficacy of phosphodiesterase type 5 inhibitors for the treatment of distal ureteral calculi: A systematic review and meta-analysis. *Investig Clin Urol*. 2017;58:82-9.
10. Sun X, Guan W, Liu H, Tang K, Yan L, Zhang Y, et al. Efficacy and safety of PDE5-Is and  $\alpha$ -1 blockers for treating lower ureteric stones or LUTS: a meta-analysis of RCTs. *BMC Urol*. 2018;18:30.
11. Bai Y, Yang Y, Wang X, Tang Y, Han P, Wang J. Tadalafil Facilitates the Distal Ureteral Stone Expulsion: A Meta-Analysis. *J Endourol*. 2017;31:557-63.
12. Goyal SK, Singh V, Pandey H, Chhabra MK, Aggarwal SP, Bhat A. Comparative efficacy of tamsulosin versus tadalafil as medical expulsive therapy for distal ureteric stones. *Urol Ann*. 2018;10:82-6.
13. Gur M, Ulu MB, Caliskan ST, Ozturk K, Akdeniz E. Dexketoprofen vs. Tamsulosin vs. Silodosin vs. Tadalafil as Medical Expulsive Therapy for Distal Ureteral Stones in Men. *J Coll Physicians Surg Pak*. 2021;31:947-52.
14. Khouni H, Laadhar A, Boulma R, Sataa S. IPDE-5 versus Alpha-blockers in the treatment of patients with distal ureteral stones: prospective, randomized, multi-centric comparative study. *Eur Urol*. 2022;81:S391. Abstract #A0251
15. Abdelaal MA, El-Dydamony EM. Comparative study between Tamsulosin, Silodosin and Tadalafil as a medical expulsive therapy for lower ureteral stones. *Arch Ital Urol Androl*. 2023;95:10849.
16. Sterne JAC, Savović J, Page MJ, Elbers RG, Blencowe NS, Boutron I, et al. RoB 2: a revised tool for assessing risk of bias in randomised trials. *BMJ*. 2019;366:14898.
17. Chen L, Staubli SE, Schneider MP, Kessels AG, Ivic S, Bachmann LM, et al. Phosphodiesterase 5 inhibitors for the treatment of erectile dysfunction: a trade-off network meta-analysis. *Eur Urol*. 2015;68:674-80.
18. Borenstein M, Hedges LV, Higgins JP, Rothstein HR. A basic introduction to fixed-effect and random-effects models for meta-analysis. *Res Synth Methods*. 2010;1:97-111.
19. Abdel-Kader MS. Evaluation of the efficacy of sexual intercourse in expulsion of distal ureteric stones. *Int Urol Nephrol*. 2017;49:27-30.
20. Abhishek L, Shashikant N, Arvind G, Ravindra S, Mahesh D. Comparison of tadalafil and tamsulosin in medical expulsive therapy for ureteric calculus: prospective, randomized, placebo controlled study [abstract] *Indian J Urol*. 2015;31(Suppl 1).
21. Aggarwal K, Mylarappa P, Ramesh D, Puvvada S. Should we suspend medical expulsive therapy: A prospective randomized trial *Indian J Urol*. 2017; 33(Suppl 1).
22. Kc HB, Shrestha A, Acharya GB, Basnet RB, Shah AK, Shrestha PM. Tamsulosin versus tadalafil as a medical expulsive therapy for distal ureteral stones: A prospective randomized study. *Investig Clin Urol*. 2016;57:351-6.
23. Kumar S, Jayant K, Agrawal MM, Singh SK, Agrawal S, Parmar KM. Role of tamsulosin, tadalafil, and silodosin as the medical expulsive therapy in lower ureteric stone: a randomized trial (a pilot study) *Urology*. 2015;85:59–63.
24. Puvvada S, Mylarappa P, Aggarwal K, Patil A, Joshi P, Desigowda R. Comparative efficacy of tadalafil versus tamsulosin as the medical expulsive therapy in lower ureteric stone: a prospective randomized trial. *Cent European J Urol*. 2016; 69:178-82.
25. Raza SZ, Kumar RV, Girish TD, Gowda A, Madappa KM. The role of tadalafil and tamsulosin alone and in combination therapy in lower ureteric stone expulsion: a prospective comparative study[abstract] *Indian journal of urology*, 2016;32(Suppl 1).

---

**Correspondence address:**

Jose Arnaldo Shiomi da Cruz, MD

Av. Dr. Arnaldo, 455

São Paulo, SP, 01246-903, Brasil

Telephone +55 11 9 7371-1242

E-mail: arnaldoshiomi@yahoo.com.br